



The Liverpool Motor Club

Aintree Sprint Series

25th April, 27th June & 5th September 2020

SUPPLEMENTARY REGULATIONS



Changes from the 2019 Supplementary Regulations are shown in Red.

1. The Liverpool Motor Club will promote **Interclub** Sprints on Saturdays 25th April & 29th June 2020 and an **Interclub / National** sprint on Saturday 5th September 2020 at Aintree Motor Racing Circuit, c/o Aintree Golf Centre, Melling Road, Aintree, Liverpool.
2. The meetings will be held under the General Regulations of Motorsport UK, (incorporating the provisions of the International Sporting Code of the FIA), these Supplementary Regulations and any written instructions that the organising club may issue for the event.
3. Motorsport UK permit numbers are: 25th April: 115208, 27th June: 115211, 5th September: 115213 & 116142
4. **Officials:-**
Secretary of the Meeting: Sue Thompson **07530 352851**
Clerk of the Course: John Harden, Deputy Clerks: Andy Fell & Phil Gough
Club Stewards: John Sinclair (all events), Alan Smith (April & June), & TBA (Sept)
Chief Scrutineer: TBA
Timekeepers: Malvern Motorsport Timing, Chief Timekeeper: Roger Warren
All other officials will be as listed in the Final Instructions
5. **Eligibility:** The three events are open to all members of the organising club and those competitors of the Championships listed in Appendix 2. The three events are also open to members of clubs belonging to the Association of North Western Car Clubs, Association of Northern Car Clubs, and to the invited clubs listed in Appendix 2.
Competitors must hold as a minimum, an **RS Interclub** competition licence issued by Motorsport UK.
The event on the 5th September is also open to all registered contenders of the British Sprint Championship, whose contenders must hold a **National** (or Higher) Competition Licence.
Amendment 1, dated 1/2/2020 re Foreign Licence Holders: The events are also open to competitors who hold an International Speed R or Race C International Licence. Any foreign competitor must comply with the event eligibility and the FIA requirement as follows:
FIA 2.3.8 7 Competitors and Drivers who wish to take part in a National Competition organised abroad can only do so with the prior approval of their own ASN. Note - Some countries include this approval on the competitor licence, for others they will need a letter of approval which the competitor should forward with their entry and a copy of their licence.
All competitors are reminded that they must hold a Speed National or Race National licence if driving a Racing or Sports Libre car over 1100cc, or equivalent forced induction, (with the exception of a pre'1994 Formula Ford 1600) unless the car competes in fully road-legal condition (S7.1.5.1).
An up to date list of championships for the three events is displayed on our website.
All competitors must produce their valid Competition Licence, Club Membership card and any relevant Championship Registration Card at Signing On.
It is recommended that competitors familiarise themselves with the current Motorsport UK Yearbook, especially Section S. References in these SR's relate to regulations in the current Motorsport UK Yearbook (e.g. S9.2.5).
6. **The provisional timetable** of the meetings will be:
Signing On from 07:30hrs followed by Scrutineering in your paddock position.
Any competitor not signed on by 10:30hrs may be disqualified from taking part in the event.
7. There will be an opportunity to walk the course from 07:15hrs to 08:30hrs.
It is strongly recommended that competitors new to the sport and those on their first visit to Aintree walk the course before the commencement of practice. There will not be any convoy runs.
All drivers must attend the drivers' briefing at 08:45
Practicing and competition will be in class order from 09:30. Timed Runs will commence after the completion of Practice. All times will be confirmed in the final instructions.
It is hoped to offer a minimum of 4 competitive runs at each event.
On 5th September, it is intended that British Sprint Championship (BSC) contenders will take all their runs in class order within the runs offered to other competitors as per the 2020 BSC regulations.
8. **Classes:** The following will apply at each event:
You must be able to produce proof of current UK Road Tax, Insurance (and MOT where applicable) at scrutineering if competing in one of the **Standard** or **Road Car** classes. Proof of Road Tax will be via DVLA Confirmation of Vehicle Tax or a recent copy of the DVLA enquiry website: www.vehicleenquiry.service.gov.uk.
Cars in Classes SA, SB, SC & SD must use tyres from List 1A in the **current** Motorsport UK Yearbook, all other Road **Car** classes must use tyres from List 1A or 1B. All tyres must comply with (L2.3).
The forced induction equivalence for classes SA, SB, SC & SD is 1.7 (**S10.4.1 or per 10.4.2 for rotary engines**).
The forced induction equivalence for all other classes is 1.4 (**S10.4.1 or per 10.4.2 for rotary engines**).

continued >

Standard Cars conforming to S11

- SA: Standard Saloon Cars up to and including 1400cc
- SB: Standard Saloon Cars over 1400cc up to and including 1700cc
- SC: Standard Saloon Cars over 1700cc up to and including 2000cc
- SD: Standard Sports Cars up to and including 2000cc

Road Cars - Series Production: (S12)

- 1A: Saloon Cars up to and including 1400cc
- 1B: Saloon Cars over 1400cc up to and including 2000cc
- 1C: Saloon Cars over 2000cc
- 1D: 2 & 4 Seater Sportscars up to and including 2000cc
- 1E: 2 & 4 Seater Sportscars over 2000cc
- 1F: Lotus Elise and other non-ferrous chassis cars up to and including 2200cc
- 1G: Lotus Elise and other non-ferrous chassis cars over 2200cc

Road Cars - Specialist Production: (S12)

- 2A: Kit, Replica & Spaceframed Cars up to and including 1800cc (car derived engines)
- 2B: Kit, Replica & Spaceframed Cars over 1800cc (car derived engines)
- 2C: Kit, Replica & Spaceframed Cars (motorcycle derived engines)
- 2D: Specialist Production Cars that are not eligible for Classes 2A, 2B or 2C

Modified Cars - Series Production: (S13)

- 3A: Modified Saloon Cars up to and including 1400cc
- 3B: Modified Saloon Cars over 1400cc up to and including 2000cc
- 3C: Modified Saloon Cars over 2000cc
- 3D: Modified 2 & 4 Seater Sportscars up to and including 2000cc
- 3E: Modified 2 & 4 Seater Sportscars over 2000cc

Modified Cars - Specialist Production (S13)

- 3F: Modified Kit, Replica & Spaceframed Cars up to and including 1800cc (car derived engines)
- 3G: Modified Kit, Replica & Spaceframed Cars over 1800cc (car derived engines)
- 3H: Modified Kit, Replica & Spaceframed Cars (motorcycle derived engines)
- 3K: Modified Cars that are not eligible for Classes 3A to 3H

Sports Libre Cars: (S14)

- 4A: Cars up to and including 2000cc
- 4B: Cars over 2000cc

Racing Cars: (S15)

- 5A: Up to and including 1100cc
- 5B: Formula Ford 1600 Racing Cars manufactured before 1st January 1994
- 5C: Cars over 1100cc up to and including 1600cc
- 5D: Cars over 1600cc up to and including 2000cc
- 5E: Cars over 2000cc

Classic Cars (S10)

- 6A: Classic Road Cars first registered before 1990
- 6B: Classic Racing Cars manufactured before 1990

Extra classes for single makes & championships etc will be added (See Appendix 2 for class numbers).

(All classes) Cars shall have a towing point of adequate strength at both front & rear, clearly marked by an arrow and the word "Tow" using a contrasting colour. A suitable point on the roll hoop will generally suffice for open single seater and open sports racing cars.

All vehicles must comply with Motorsport UK Technical Regulations and with the specific regulations for each category/class as specified in S10. See the current Motorsport UK Yearbook Section B for the definition of a Sports Car.

The requirements of the current Motorsport UK regulations with regard to safety provisions for Sprint and Hillclimb cars must be adhered to, including the use of suitable Frontal Head Restraints where mandatory.

9. All road **legal** vehicles must have a reverse gear operable at all times (S10.9.1)
All vehicles must be fitted with a timing strut complying with S.10.10.
All vehicles must comply with the silencing levels J5.18. There will be an official noise test carried out before practice runs and further checks may be made during the event.
10. Competition Numbers must be affixed in accordance with S9.2.5 before presenting the car for Scrutineering. Numbers will not be supplied by the organisers, but there will be a limited supply of black numbers for sale at signing-on. It is helpful if a smaller forward facing number is displayed on all cars.
11. **The entry list opens** on publication of these regulations and closes finally 14 days before the appropriate event. The entry fee is £115.00, (Liverpool MC Members: £112.00).
(Each entry fee includes Motorsport UK permit fees of £27.50 (Interclub) or £27.80 (National)).
Entries should be made via the Club's secure on-line booking facility at www.liverpoolmotorclub.com.
By entering on-line, competitors are deemed to be bound by the event and Motorsport UK regulations (D13.2.3).

continued >

The Club reserves the right to pass on to the competitor concerned any charges incurred if their cheque does not clear upon first presentation.

Entries will also be accepted by post. Postal entries must be made on the official entry form, include the correct entry fee and must bear the original signature of the competitor. A separate form must be completed for each event entered by post. Entries are not accepted by e-mail or fax. Post dated cheques will be accepted providing they are dated not less than 3 weeks before the relative event. The Club reserves the right to pass on to the competitor concerned any charges incurred if their cheque does not clear upon first presentation.

All postal entries must be sent to:

LMC Entries Secretary
18 Monarch Drive,
Northwich, Cheshire, CW9 8TH

Tel: 0777 332 4686
email: LMCentries@gmail.com

The maximum entry for each meeting is 140, the minimum is 80. The minimum for each class will normally be 2. The first 100 entries will be selected in order of receipt; the remainder will be selected at the discretion of the organisers. Should any of the above minimum numbers not be reached, the organisers have the right to either cancel the meeting or amalgamate classes.

Cancelled/Withdrawn entries: In order for a cancelled or withdrawn entry to be considered for a refund the organisers must be in receipt of written notification (written notification includes email).

Entries withdrawn not less than **5** days prior to the event will be refunded but may be subject to deduction of an administration charge of £10.00.

Entries withdrawn less than **5** days prior to the event **will** only be eligible for a refund of the Motorsport UK fee. In all cases refunds will be at the discretion of the organisers.

Event Cancellation: If, for reasons of safety or force majeure, an event is cancelled on the day of the event but prior to the commencement of practice, each competitor's entry fee will be refunded less £50.00. If an event is cancelled after commencement of practice, no refund will be made.

12. **The length of the course** is 1,847 metres (1.14 miles) and consists of the motor racing circuit from the start to a point 325 metres after the exit from Becher's Bend. The track is approximately 9.75 metres (35ft) wide. Cars will start singly in class order and in **programme** order within each class. The starting signal will be a green light and the method of timing is Automatic Class E. The finish line will be indicated by chequered marker boards. Competitors will have the opportunity of two practice runs (S2.1.1). After the satisfactory completion of practice each driver shall be given a minimum of two timed runs in the same car in each class entered, the fastest run to count for the results as per S9.5
13. **Provisional results** will be published as soon as possible after each run or following the end of the event. Results will be displayed on the notice board in the paddock office. Any **protest** must be lodged in accordance with C5. Marking and penalties will be as printed in the appropriate section of the current Motorsport UK Yearbook, ~~except as modified below:~~
~~Ties: In the event of a tie occurring, a result shall be obtained by taking the total times of the best two runs, the lesser total being declared the winner. [Superseded by S9.5.6]~~
14. **Awards** will be presented as follows:

FTD :	Perpetual Trophy & Replica
1st in Class:	An Award (Subject to 2 competitors starting the event in that class)
2nd in Class:	An Award (Subject to 5 competitors starting the event in that class)
3rd in Class:	An Award (Subject to 7 competitors starting the event in that class)

All perpetual trophies will remain the property of Liverpool Motor Club and must be returned clean and in good order no later than the eleventh month after the event at which it was presented.
15. All other General Regulations of the Motorsport UK apply as written except for the following, which is modified:
S9.2.3: A driver may drive up to two cars, each in a different class.
16. **Food:** A wide variety of hot and cold meals, drinks and snacks will be available in the Golf Centre cafe, (adjacent to the paddock), during the event.
17. **Camping:** The entrance gates will be open on the Friday evening until **21:00**hrs for campers and overnight parking which is free of charge. Gates will be locked promptly at **21:00**hrs on Friday evening until 06:30hrs on Saturday morning with no exit or entry between these times. **Camping is not available on Saturday night.**
18. No trade sales may be undertaken at the circuit without the prior written permission of the organisers.
19. A strict 10 mph speed limit will be enforced in all public areas. Competitor and support vehicles must not exceed this when driving into and from the paddock.
20. All vehicles must be parked OFF the paddock road.
21. Details of local accommodation are available on our website.

continued >

You can enter any of our sprints, hillclimbs and track days via our Website: www.liverpoolmotorclub.com

Appendix 1

All cars must comply with S10.

Clarifications for Standard Cars and Road Cars

All cars must have current UK road tax. Proof will be via DVLA Confirmation of Vehicle Tax or a recent copy of the DVLA enquiry website (www.vehicleenquiry.service.gov.uk/), a current MOT if age requires it, and insurance. It is the driver's responsibility to prove compliance.

All **Standard Cars** and Road Cars must remain in a totally road legal condition at all times. (S10.11)

Classes SA to SD - Standard Cars conforming to S11

These classes are intended to attract new inexperienced competitors driving unmodified cars, as a low-cost entry to the sport. Other than adding FIA/Motorsport UK approved/homologated safety equipment and/or fitting uprated brake friction material, no other modifications are allowed. Any replacement component fitted must be a *Standard Part or a Standard Pattern Part.

Restricted to 2 wheel drive cars produced since 1st Jan 2000, minimum production 5000 per annum S11.1.1

Engine; Maximum capacity 2000cc, Forced induction equivalency is 1.7 (S10.4.1 & 10.4.2)

Wheels and tyres; Standard wheels, and list 1A tyres only, complying with S11.4

* "Standard" means a component that was listed in the car manufacturer's price list for that model of car.

Classes 1A to 1G and 2A to 2D - Road Cars conforming to S12

Tyres; Tyres must comply with S12.6.

Brakes; Brake callipers, discs, master cylinder, shoes & pads can be modified. Non-ferrous discs are only permitted in accordance with J5.6.2. Modification of the brake pedal is permitted. The fitting of aftermarket pedal assemblies is not permitted. Anti-Lock braking systems can be removed but cannot be added to a vehicle that does not have one as a manufacturer specified option.

Suspension; (As per S12.7) Non-adjustable Strut Braces across the top of the front suspension turrets are allowed but these must be removable and not welded in place.

Safety; Pyrotechnic safety devices such as airbags and seatbelt pre-tensioners may be disconnected or removed.

Cars competing in Road Legal condition:

Whilst Scrutineers and Championship Officials reserve the right to check all road **legal** competition vehicles' taxation status via the DVLA website to ensure compliance with championship/event regulations, the onus remains with the competitor to prove compliance when requested.

It is the competitor's responsibility to ensure that all data held by the DVLA is accurate for the vehicle being entered into competition.

All other Technical Regulations are as specified in Section S

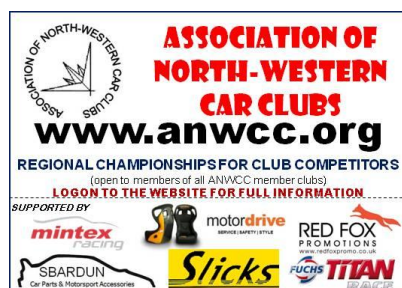
continued >

ENVIRONMENTAL CONCERNS

Motorsport UK is exceedingly concerned by the impact of single-use plastic tyre-wrapping. As reusable alternatives are available competitors are encouraged to reduce plastic usage in this regard. Use of these plastic tyre-wraps is to be eradicated by 2023

There are no facilities for the disposal of oil, fuel or other hazardous liquids at the venue.

Competitors should make arrangements to take such liquids away with them for disposal at an approved facility.



Appendix 2

Invited Championships & Clubs

25th April 2020, Aintree Spring Sprint

- Liverpool Motor Club Speed Championship
- Association of North Western Car Clubs Sprint Championship
- Aston Martin Owners Club Speed Championship (Class 7)
- Caterham Academy 1 & 2 (Class 9)
- Classic Marques Speed Challenge (Class 8)
- Historic Rally Car Register Speed Series
- Jaguar Drivers' Club, 4-Hills & Sprint Championship (Class 16)
- Longton's Northern Speed Championship
- Midland Speed Championship
- SD34 Motorsport Group Sprint & Hillclimb Championship
- Triple M / Pirelli NSCC Speed Championship
- TVR Car Club Speed Championship (Class 17)

27th June 2020, Aintree Summer Sprint

- Liverpool Motor Club Speed Championship
- Association of North Western Car Clubs Sprint Championship
- Longton's Northern Speed Championship
- Lotus 7 Club, Speed Championship (Class 10)
- MGCC Speed Championship (Class 11)
- Morgan Sports Car Club, Techniques Speed Championship (Class 12)
- Revington TR, TR Register Sprint & Hillclimb Championship (Class 15)
- SD34 Motorsport Group Sprint & Hillclimb Championship
- Triple M / Pirelli HSA Speed Championship

5th September 2020, Aintree Autumn Sprint

- Liverpool Motor Club Speed Championship
- Motorsport UK – British Sprint Championship
- Motorsport UK – Sprint Leaders Championship
- Association of North Western Car Clubs Sprint Championship
- BARC Connaught Speed Championship
- Longton's Northern Speed Championship
- SD34 Motorsport Group Sprint & Hillclimb Championship
- Triple M / Pirelli NSCC Speed Championship
- Westfield Sports Car Club Speed Series
- XBC Cross Border Speed Championship

Invited to all the above events are members of:

- Kirkby Lonsdale Motor Club
- Longton & District Motor Club
- Members of any club that belongs to the ANCC or ANWCC regional associations



The above list was correct at time of publication. Further championships may be added.

The latest list of included championships can be found at www.liverpoolmotorclub.com

Section 5 of these Supplementary Regulations was amended on 1/2/2020 to include eligibility of foreign competitors

End ■

Liverpool Motor Club is involved with several other motorsport events during the year including two Speed Hillclimbs at spectacular Barbon Manor in Cumbria in June & July. We also run great value Track Days at Aintree in May and August which include dedicated sessions for single seaters & sports racing cars. See our website for details:-

www.liverpoolmotorclub.com